

Corri A. Feige
Commissioner

www.DNR.Alaska.Gov



Department of
Natural Resources

Anchorage, Alaska

STATE OF ALASKA

PRESS RELEASE

For Immediate Release: April 15, 2021

Public traffic to be restricted on Willer-Kash Road in July

(Palmer, AK) – The Alaska Division of Forestry will restrict public traffic on the Willer-Kash Road corridor near Willow from July 1 through August 5.

“The restrictions are necessary to ensure the safety of the public and contractor during work to repair eroded and rutted sections of the road, install culverts and re-establish ditches to improve drainage,” said Stephen Nickel, the division’s Mat-Su area forester in Palmer. “The road has seen heavy use for remote recreation, hunting, and timber sales, and needs repair to ensure its long-term durability.”

The Willer-Kash Road is an approximately seven-mile long, one-lane road that starts at the junction of Jim Carter Road and Kenny Boulevard near Shirley Town Drive at Mile 43 of the Willow Fishhook Road. It provides access to state forestry land and the adjacent Willow Mountain Critical Habitat Area.

Traffic access will be limited to landowners, and administrative staff with the Alaska Department of Fish and Game, the Division of Forestry and Alaska State Parks. Signs indicating the traffic restrictions will be posted at the beginning of Willer-Kash Road.

While public use of Willer-Kash Road is restricted between July 1 and August 5, the designated all-terrain vehicle (ATV) trails that cross it will remain open, Nickel said. ATV users should slow down and proceed with caution when crossing the road during construction, as it may be difficult for construction vehicles and heavy equipment to stop.

Funding for the work comes from a 2017 federal grant through the Department of Fish and Game under the Federal Aid in Wildlife Restoration Program authorized by the Pittman-Robertson Act, and is funded by taxes on sale of firearms, ammunition and archery equipment. The federal grant will augment 2015 state capital improvement match funds to resurface damaged portions of the road, improve drainage, and address safety issues.

To learn more, visit the project website:

<https://www.adfg.alaska.gov/index.cfm?adfg=hunteraccess.willerkash>

CONTACT: Stephen Nickel, (907) 761-6301, stephen.nickel@alaska.gov

###

STAY CONNECTED:

DNR Newsroom: http://dnr.alaska.gov/commis/dnr_newsroom.htm

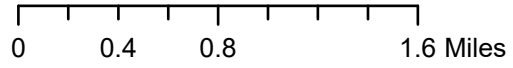
DNR on Social Media: http://dnr.alaska.gov/commis/social_media.htm

DNR Public Information Center: <http://dnr.alaska.gov/commis/pic/>

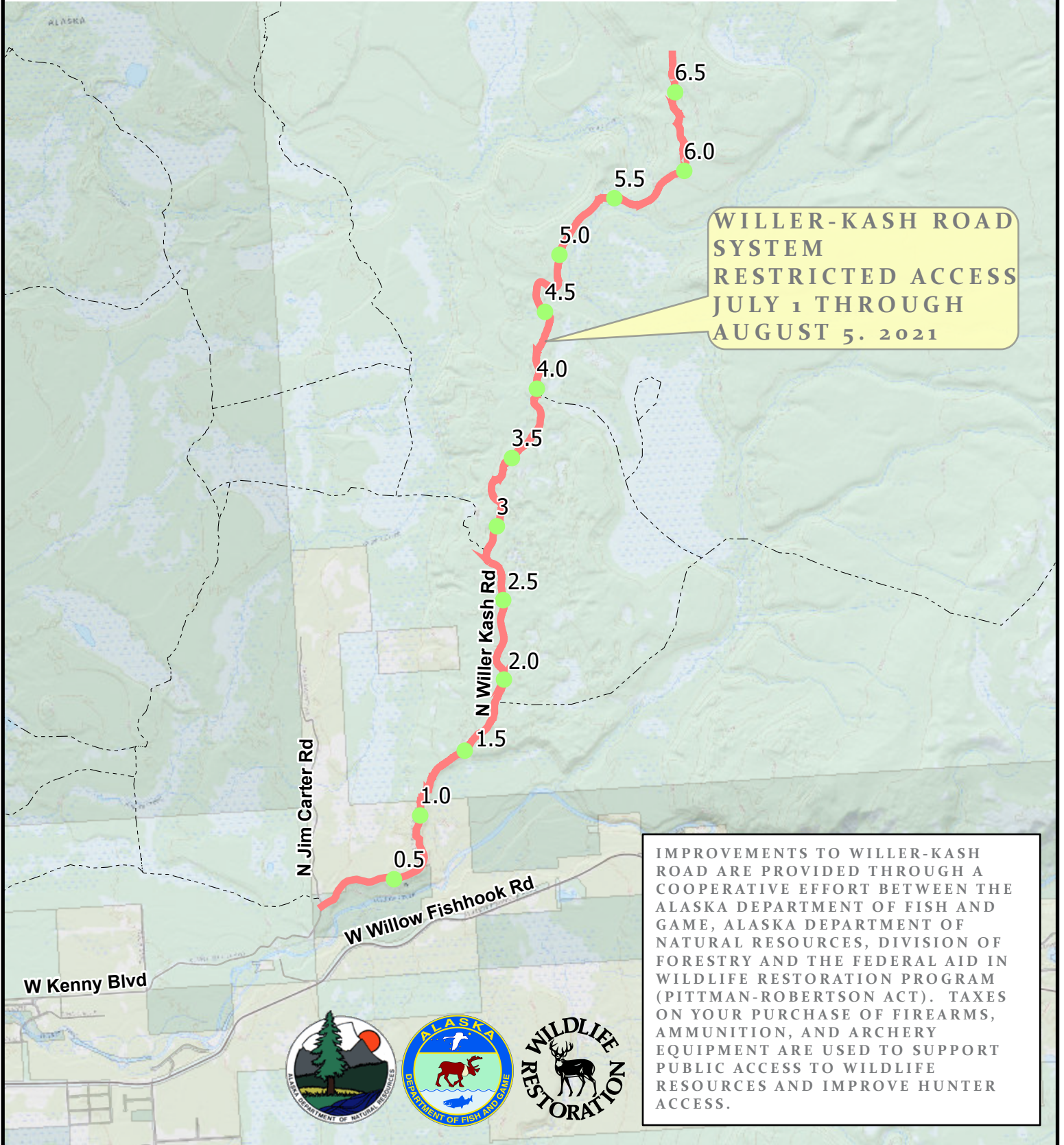
LEGEND

- RESTRICTED ROAD CLOSED TO PUBLIC USE
- TRAILS
- WILLER-KASH ROAD MILEPOSTS
- ROADS
- BOROUGH
- PRIVATE
- STATE

BACKGROUND IMAGERY FROM USGS.
PARCEL DATA FROM ALASKA
INTERAGENCY COORDINATION
CENTER



1 INCH EQUALS 1 MILES



**WILLER-KASH ROAD SYSTEM
RESTRICTED ACCESS
JULY 1 THROUGH
AUGUST 5, 2021**

IMPROVEMENTS TO WILLER-KASH ROAD ARE PROVIDED THROUGH A COOPERATIVE EFFORT BETWEEN THE ALASKA DEPARTMENT OF FISH AND GAME, ALASKA DEPARTMENT OF NATURAL RESOURCES, DIVISION OF FORESTRY AND THE FEDERAL AID IN WILDLIFE RESTORATION PROGRAM (PITTMAN-ROBERTSON ACT). TAXES ON YOUR PURCHASE OF FIREARMS, AMMUNITION, AND ARCHERY EQUIPMENT ARE USED TO SUPPORT PUBLIC ACCESS TO WILDLIFE RESOURCES AND IMPROVE HUNTER ACCESS.

